

Name \_\_\_\_\_

## Is it Fair to Trick Kids?

*A thinkLaw Math Lab*

### thinkStarter

Family Feud is a game show. Two families compete. The host asks a survey question that was asked to a group of 100 people, such as, "Name the hour that you get up on Sunday mornings." Contestants must guess the most popular response. The game continues until one family has guessed all the answers on the board, or until time runs out.



Answer these Family Feud-style questions.

If we surveyed 100 students in our school and asked them "What is the most common mistakes that students make on math tests?", what would be the #1 response?	
1	
2	
3	

If we surveyed 100 students in our school and asked them "What are the ways test makers try to trick kids on standardized math tests?", what would be the #1 response?	
1	
2	
3	

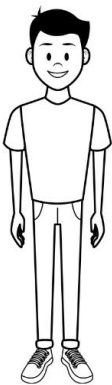
### thinkStarter Summary

There are common mistakes that students make on math tests. The people who make tests use mistake analysis to help them write questions that will trick kids. **Mistake analysis** is when you spend time thinking critically about

mistakes. Is this fair? In this thinkLaw math lab, we will think more about mistake analysis and thinking like a test maker.

What Would Joe Schmo Do?

Today we are going to think about Joe Schmo. Joe always falls for the trick answer. Joe does not read the directions carefully. Joes does not complete all the steps in a problem. We are going to think about the mistakes Joe may make on a math test.



Question 1



Today, Colin's Bakery made 283 cookies and sold 146 cookies. To the nearest ten, what is the number of cookies that are left to sell tomorrow?

If we surveyed 100 students in our school and asked them "What mistake would Joe Schmo make on this question?", what would be the #1 response?	
1	
2	
3	

Use these top three mistakes to write a multiple-choice question. Be sure to also include the correct response.

Today, Colin's Bakery made 283 cookies and sold 146 cookies. To the nearest ten, what is the number of cookies that are left to sell tomorrow?	
A	
B	
C	
D	

Question 2

Andrea baked two batches of brownies. Each batch has 36 brownies. Which is closest to the total number of brownies Andrea baked?



If we surveyed 100 students in our school and asked them "What mistake would Joe Schmo make on this question?", what would be the #1 response?

1	
2	
3	

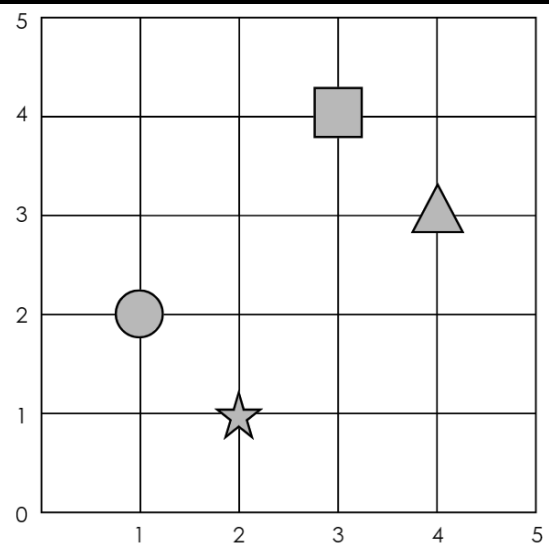
Use these top three mistakes to write a multiple-choice question. Be sure to also include the correct response.

Andrea baked two batches of brownies. Each batch has 36 brownies. Which is closest to the total number of brownies Andrea baked?

A	
B	
C	
D	

### Question 3

Which ordered pair shows the location of the square?



If we surveyed 100 students in our school and asked them "What mistake would Joe Schmo make on this question?", what would be the #1 response?

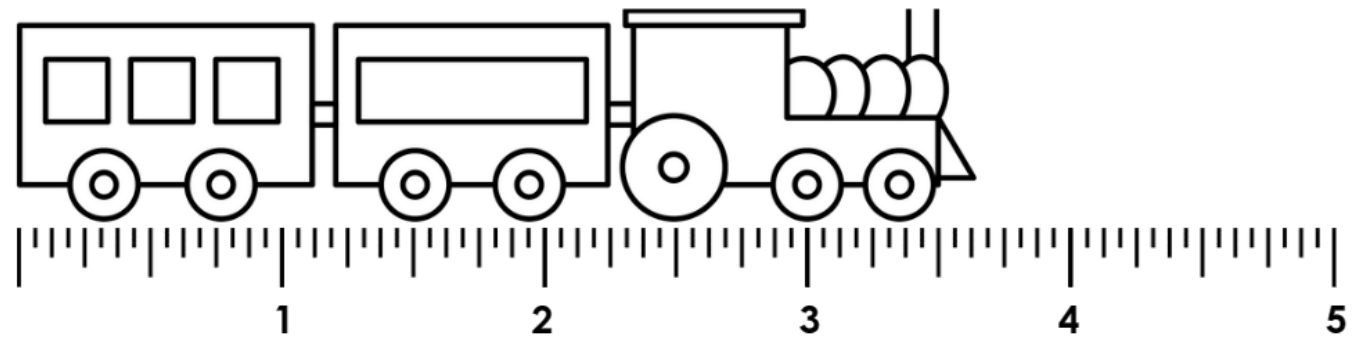
1	
2	
3	

Use these top three mistakes to write a multiple-choice question. Be sure to also include the correct response.

Which ordered pair shows the location of the square?	
A	
B	
C	
D	

**Question 4**

To the nearest half-inch, how long is the toy train?



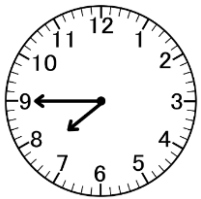
If we surveyed 100 students in our school and asked them "What mistake would Joe Schmo make on this question?", what would be the #1 response?	
1	
2	
3	

Use these top three mistakes to write a multiple-choice question. Be sure to also include the correct response.

To the nearest half-inch, how long is the toy train?	
A	
B	
C	
D	

Question 5

Katrice will leave for school at the time shown on the clock.  
What times does the clock show?



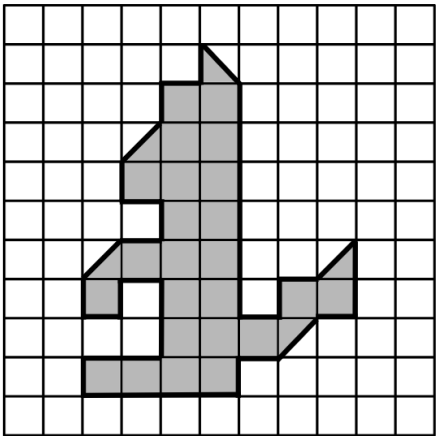
If we surveyed 100 students in our school and asked them "What mistake would Joe Schmo make on this question?", what would be the #1 response?	
1	
2	
3	

Use these top three mistakes to write a multiple-choice question. Be sure to also include the correct response.

Katrice will leave for school at the time shown on the clock. What times does the clock show?	
A	
B	
C	
D	

Question 6

How many square units were used to make the figure?



If we surveyed 100 students in our school and asked them "What mistake would Joe Schmo make on this question?", what would be the #1 response?	
------------------------------------------------------------------------------------------------------------------------------------------------	--

1	
2	
3	

Use these top three mistakes to write a multiple-choice question. Be sure to also include the correct response.

<i>How many square units were used to make the figure?</i>	
A	
B	
C	
D	



What are the top 3 ways thinking like a test maker helps you take a standardized test?

1	
2	
3	

### thinkBigger

Do you think it is fair for test makers to use mistake analysis to trick kids?

*What is the best argument for each side?*

It is fair for test makers to use mistake analysis.	It is NOT fair for test makers to use mistake analysis.