

Is it Fair to Trick Kids?

thinkStarter



Family Feud is a game show. Two families compete. The host asks a survey question that was asked to a group of 100 people, such as, "Name the hour that you get up on Sunday mornings." Contestants must guess the most popular response. The game continues until one family has guessed all the answers on the board, or until time runs out.

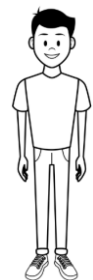
Answer these Family Feud-style questions.

If we surveyed 100 students in our school and asked them "What is the most common mistakes that students make on math tests?", what would be the #1 response?	
1	
2	
3	

If we surveyed 100 students in our school and asked them "What are the ways test makers try to trick kids on standardized math tests?", what would be the #1 response?	
1	
2	
3	

thinkStarter Summary

There are common mistakes that students make on math tests. The people who make tests use mistake analysis to help them write questions that will trick kids. **Mistake analysis** is when you spend time thinking critically about mistakes. Is this fair? In this thinkLaw math lab, we will think more about mistake analysis and thinking like a test maker.



What Would Joe Schmo Do?

Today we are going to think about Joe Schmo. Joe always falls for the trick answer. Joe does not read the directions carefully. Joe does not complete all the steps in a problem. We are going to think about the mistakes Joe may make on a math test.

Question 1

Andrea baked two batches of brownies. Each batch has 36 brownies.
Which is closest to the total number of brownies Andrea baked?



If we surveyed 100 students in our school and asked them "What mistake would Joe Schmo make on this question?", what would be the #1 response?	
1	
2	
3	

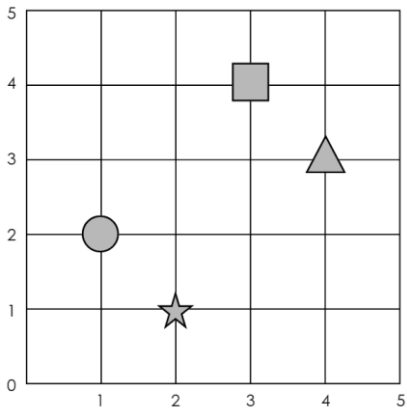
Use these top three mistakes to write a multiple-choice question. Be sure to also include the correct response.

Andrea baked two batches of brownies. Each batch has 36 brownies. Which is <u>closest</u> to the total number of brownies Andrea baked?	
A	
B	
C	
D	

Question 2

Which ordered pair shows the location of the square?

If we surveyed 100 students in our school and asked them "What mistake would Joe Schmo make on this question?", what would be the #1 response?



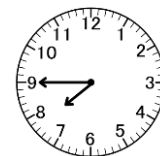
1	
2	
3	

Use these top three mistakes to write a multiple-choice question. Be sure to also include the correct response.

Which ordered pair shows the location of the square?	
A	
B	
C	
D	

Question 3

Katrice will leave for school at the time shown on the clock. What times does the clock show?



If we surveyed 100 students in our school and asked them "What mistake would Joe Schmo make on this question?", what would be the #1 response?	
1	
2	
3	

Use these top three mistakes to write a multiple-choice question. Be sure to also include the correct response.

Katrice will leave for school at the time shown on the clock. What times does the clock show?	
A	
B	
C	
D	

Discussion Questions:

- What are the top 3 ways that thinking like a test maker helps you take a standardized test?
- Do you think it is fair for test makers to use mistake analysis to trick kids? What is the best argument for each side?
- How do you feel before you take a math test? How do you think these feelings impact your performance on a test?
- What advice would you give a friend about thinking like a test maker?