
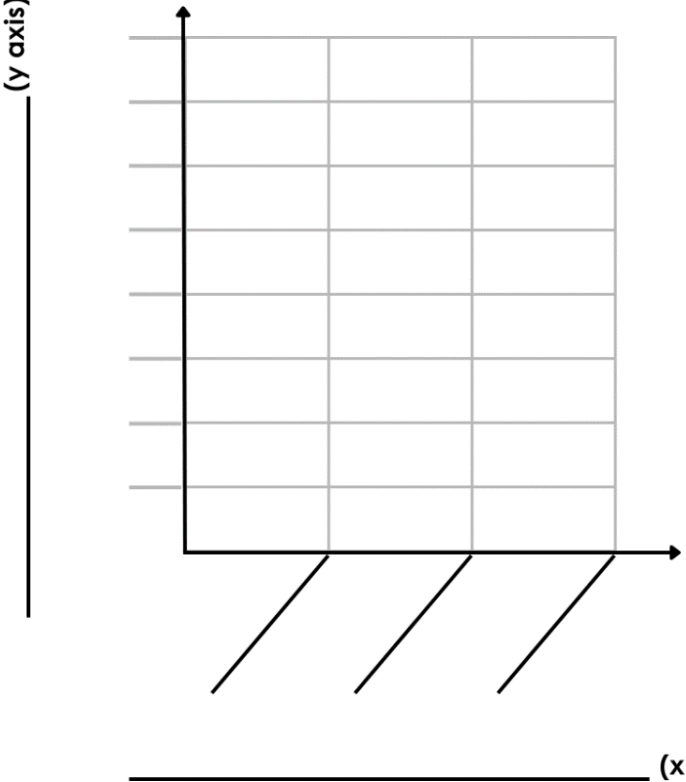


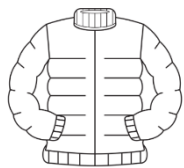
Name _____

The Incredible Changing Price (Part 1)

A thinkLaw Math Lab

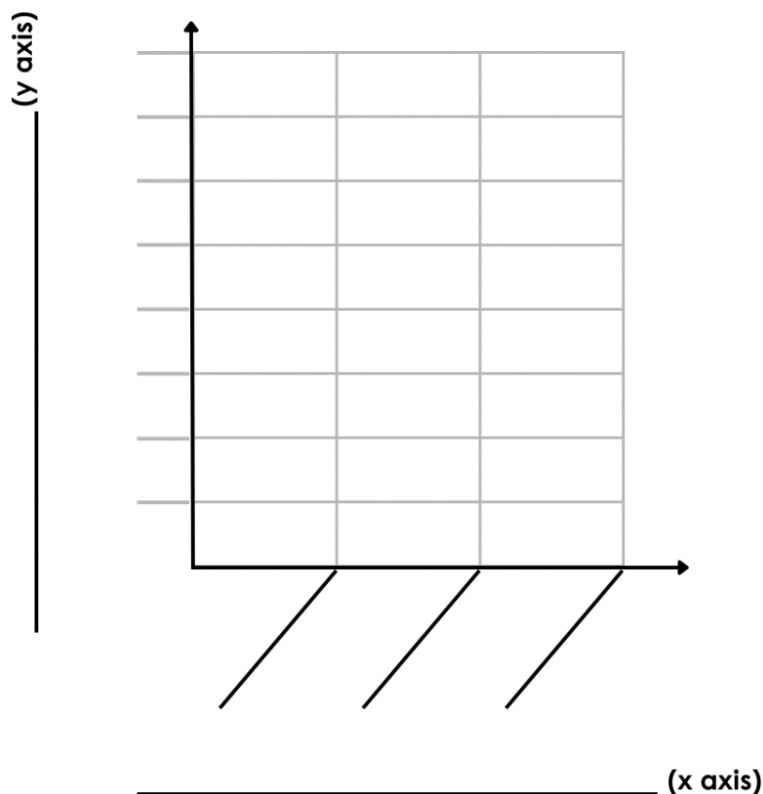
Example 1: Toll Roads		
<div></div> <div>The price of driving on a toll road is not always the same. The rates are higher during the busiest times of the day. Compare the price to drive on California's 91 Express Lanes throughout the day.</div>		
Title: _____		
<div><div>(y axis)</div><div>(x axis)</div></div>	Driving at 10:00 AM the toll price \$5	
	Driving at 3:00 PM the toll price \$25	
	Driving at 7:00 PM the toll price \$10	
How would a driver who uses the toll road feel about this?	How would a person that uses public transportation feel about this?	Do you think these price differences are reasonable? <input type="checkbox"/> Reasonable <input type="checkbox"/> Unreasonable

Example 2: Clothes



During the year clothing prices can vary. Compare the average price of the same kids' jacket throughout the year.

Title:



Price of the jacket in
January
\$21

Price of the jacket in
June
\$35

Price of the jacket in
October
\$43

How would a store owner
feel about these
increases?

How would a parent feel
about these increases?

Do you think these
price differences are
reasonable?

- ☐ Reasonable
- ☐ Unreasonable